

MovieBird 30

Manual Instruction

MovieBird International Sp. z o.o.

ul. Romualda Traugutta 5

45-667 Opole

Poland

Tel: +48 77 456 60 77

Fax: +48 77 456 60 77

e-mail: info@moviebird.com

www.moviebird.com

Part 1

Safety Information

Part 2

Crane Mechanics

Part 3

Electronics / Troubleshooting

Part 1

Safety Information

Safety Straps / how to transport

When not in use, or during transport, the crane should always be secured by two safety straps – one at the front and one at the back. On the dolly, fasten the safety straps with snap hooks at the eyebolts. On the crane, pull the straps through the holes provided. This prevents the straps from slipping off under strain or becoming detached unintentionally. Also one safety strap need to hold the last section to prevent it from jumping while being transported.

During transport, the sections need to be secured by attaching the blockade to the first and last section, exactly how it's shown at the picture below.

Also both breaks (pan and tilt) need to be released.

Securing the counterweights

The counterweights should always be secured by M16 bolts to prevent them from failing off.

Cleaning, Maintenance, Service

The crane should never be cleaned when the electronic is switched on to avoid lethal injuries! Rails and steel wheels should be cleaned from dirty grease as often as possible to maintain best performance of the arm.

The cables should be always checked if they're tightened up properly before working with the arm. If the cables are loosened there is a risk that one of them will fall down of the drum which can cause heavy damage to the arm and is also very dangerous for the people nearby.

Also it's highly recommended to check:

- If the counterweight cables tensiity is good enough and if not, then tight them up;
- If the chain from chain drive is tightened up properly and if not, to do so;
- If the side belt is tightened up properly and if not, to do so;

Information about above steps are described deeper in this instruction.

Protective Covers

There is always a danger of someone gripping the crane beam and having their hands cut off by the moving sections. It is therefore forbidden to work with a crane without the protective covers being fitted. The protective covers should only be removed for servicing and cleaning the rails and steel wheels, and must always be screwed back on afterwards. Also the electronics must be always switched off before removing the covers.

Part 2

Crane Mechanics

How to Balance The Crane

This step guide is showing an example of how to balance the crane.

1. Put 15 counterweights on each side of the crane (40 total).
2. Remove section blockade and release all the breaks (pan/tilt).
3. Extract the arm a little so the platform will go off from the front end stop.
4. Turn on electronics (box, leveling head).
5. Intract the arm. This is the 1st position to balance the crane.
6. Loosen up the rear strap. 2nd person should be securing the crane. If that person is able to hold the arm then remove both straps.
7. Check which side of the crane is heavier. If it's the front then move the counterweight platform to the rear side until we get the balance (similarly if the rear side is heavier) using the screw shown at the picture below (you need to loosen up 2 screws before adjusting the platform).
8. If the crane is still unbalanced after step 7, then we use donuts to balance it.
9. When we got the balance on the 1st position – extract the arm until the counterweight platform reach the rear end stop (it should be on learning mode so it will move slowly – that's what we want). On its way if one of the side will be too heavy to hold then remove or add the counterweights depending on which side is heavier. When the arm will be extracted to the end then it's the 2nd position to balance the crane.
10. If the front overweights – add the counterweights until balance is obtained. If the rear is heavier – remove the counterweights until balance is obtained.

note: we use all kind of counterweights if it's necessary to add small values.

We need to remember that M16 bolts that secure the counterweights also counts in the balance process.

11. After we got the balance when the arm is extracted – intract to the 1st position to see if the balance isn't lost (it shouldn't if you followed this step guide).
12. Crane is ready to work.

Dolly

D.1. Dolly is permanently equipped with leveling jacks. We do recommend to use all of them while operating the crane for best stability and to maintain perfect level in both axes.

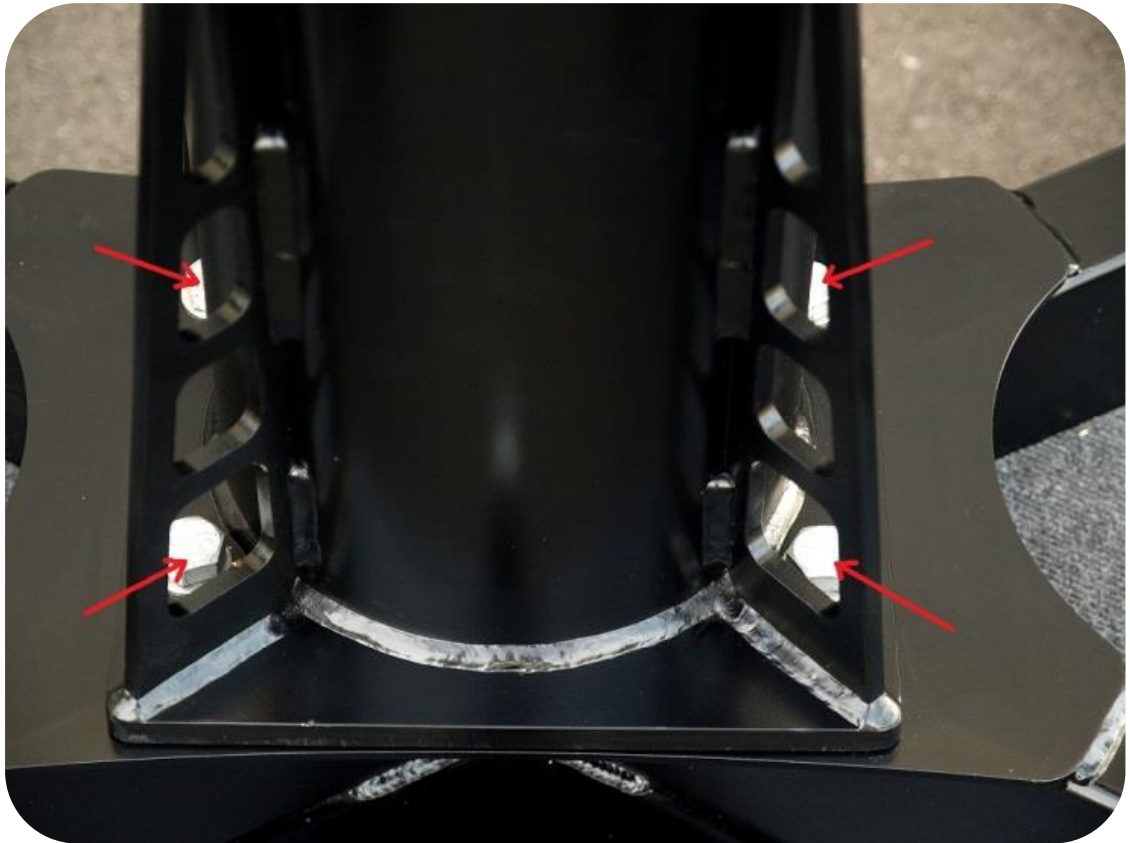
D.2. Track wheels are also permanently equipped into the dolly (picture above).

D.3. Crane base is equipped with pneumatic wheels. Optionally we do provide hard studio wheels also.

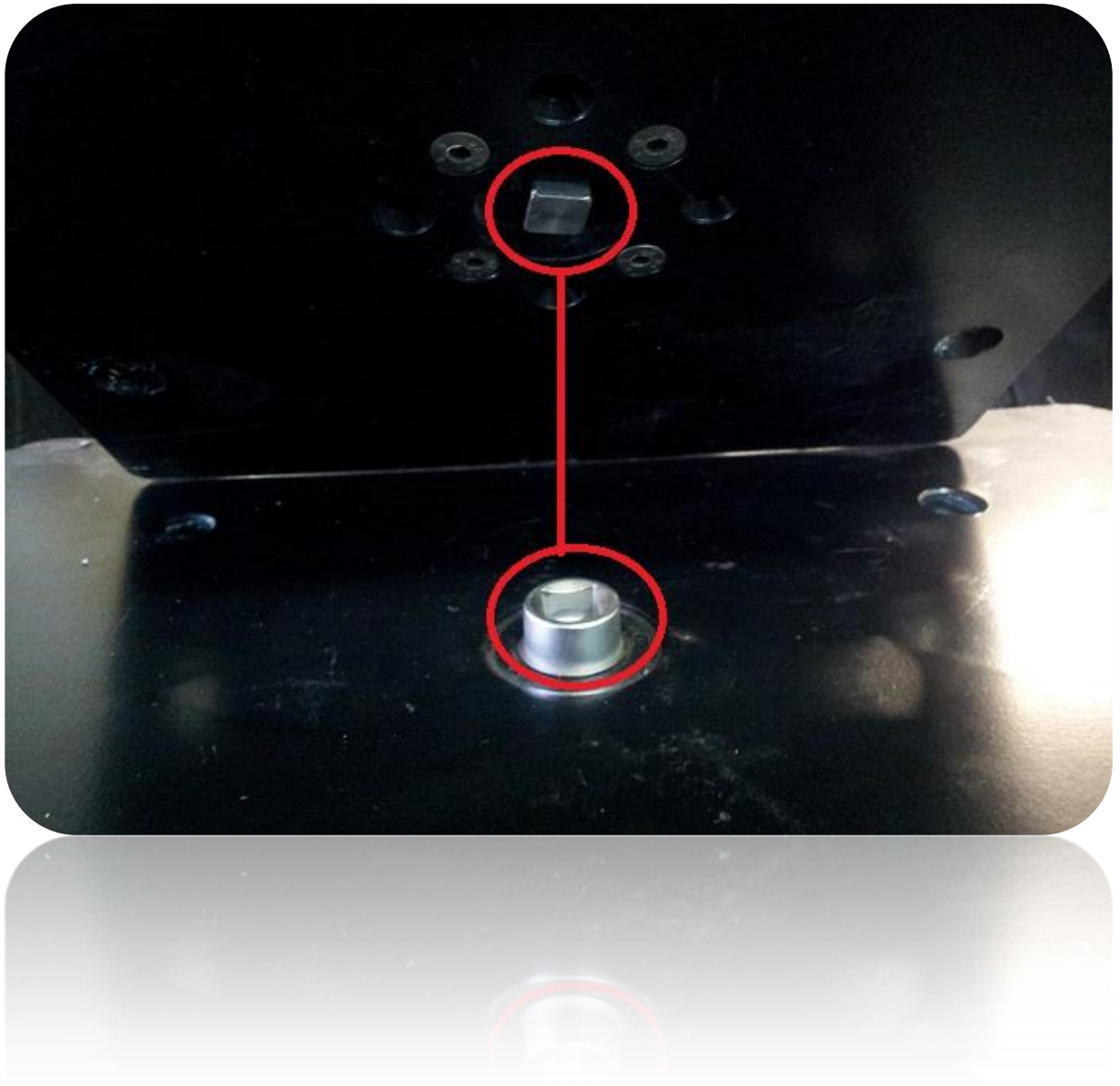
D.4. On the dolly there's a steering supported by 2 drawbacks connected to each other for best maneuvering of the crane. Optionally it's possible to block one of the drawback and separate it from the other one by dismounting the connecting strip under the dolly.

Column

C.1. The column is mounted onto the dolly by using four M16 screws.



C.2. Also it's crucial to be sure that square receiver on the bottom of the column is properly engaged with the square shaft socket on the dolly.



C.3. There are four screws that needs to be released before extending telescopic column and also horizontal break must be locked.

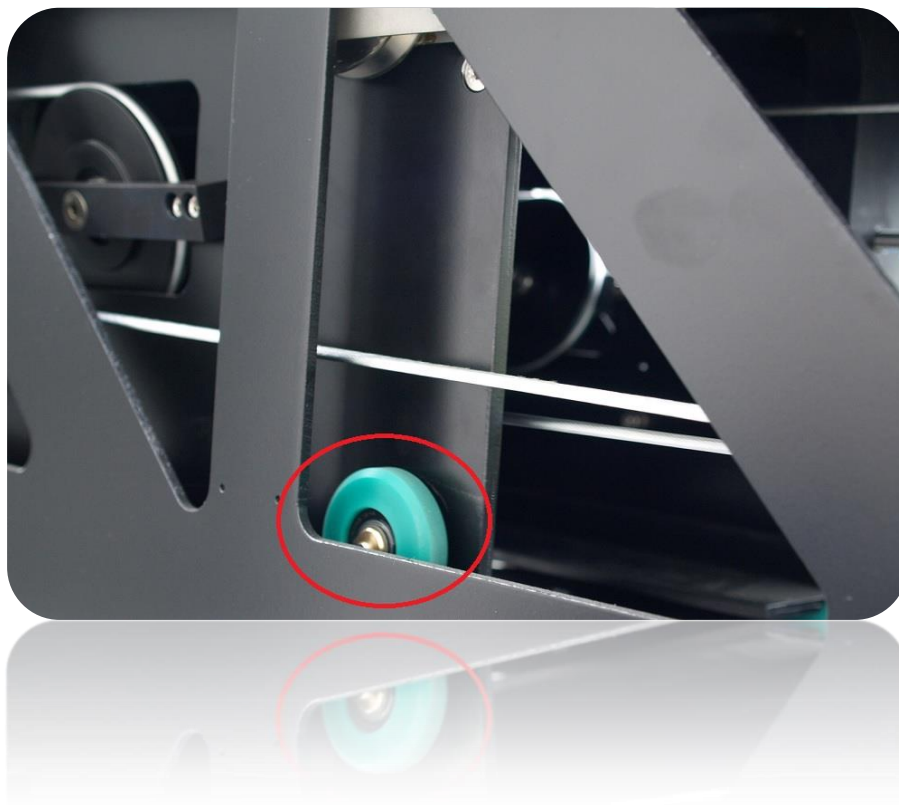
After those steps the inner column can be raised or lowered with a 24mm ratchet or by using the drill. The column can be extended by 45cm until visible marking appear.

Arm

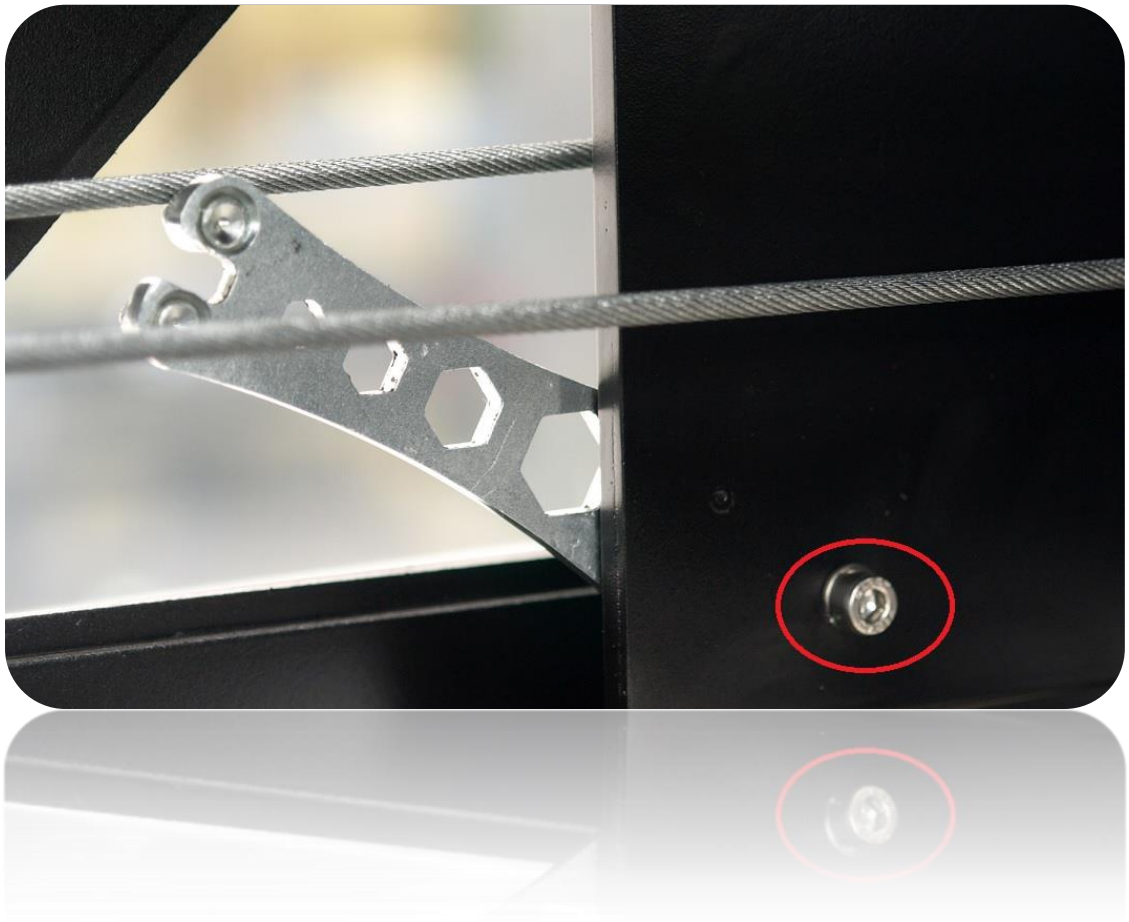
IMPORTANT: Electronics **MUST** be switched off before working inside of the arm. Also it is forbidden to move the sections during adjustment of crane mechanics. MovieBird does not take any responsibility if someone is maintaining the crane and don't abide above rules.

A.1. How to adjust green sliding wheels.

After some time of crane usage there is possibility that the sliding green wheels - on which sections are moving during first few meters – needs to be tuned.



To tune up the green wheel you need to loose (don't release it) the helical screw...



...and adjust the wheel with leveling head key. The green wheel needs to touch the section on which it is sliding on the halfway position of extracting the arm.



IMPORTANT: Electronics **MUST** be switched off before working inside of the arm. Also it is forbidden to move the sections during adjustment of crane mechanics. MovieBird does not take any responsibility if someone is maintaining the crane and don't abide above rules.

A.2. On the pictures you can see how to properly stretch the chain on the chain drive;

A.3. On the picture you can see how to properly stretch the belt on the right side of the crane;

A.4. How to tension the cables.

Prior to cables tensioning, section covers must be removed and then visually assess the condition of the rope.

If any of the cables are damaged, depart from the tensioning and call the MovieBird service for repair.

Tensioning the cables:

- 1) The crane must be balanced and be fully loaded.
- 2) Tension check – crane lifted. Tension adjustment – crane leveled.
- 3) Expand the crane VERY SLOWLY to maximum and lift the arm to the very top.
- 4) Once again, assess the condition of the cables.
- 5) Visually assess the tension of the cables. Cables should be stretched evenly and shouldn't sag. Cables should run in the section parallel to each other and parallel to the section.
- 6) If any of the cables are not parallel to the section or are loose, the tensioning process should start from them.
- 7) Level the crane. Turn off the power. Tension the cable until it is straight in the section. Raise the arm to maximum and check the tension.
- 8) Strain the cables until the tension is even and the course of cables in sections are parallel. Check it by lifting and lowering the arm.
- 9) The crane has cables to pull out and pull in the sections. There should be a balance on the regulators. In other hand the sections can hit each other.

IMPORTANT: Electronics MUST be switched off before working inside of the arm. Also it is forbidden to move the sections during adjustment of crane mechanics. MovieBird does not take any responsibility if someone is maintaining the crane and don't abide above rules.

Here's an example of how to tension the cables.



1. Release this nut.

And after:



- 2. Using this nut tension the cable.
- 3. Hold the cable to prevent it from rotating

A.5. Upper counterweight cables tensioning.

1. Before tensioning the cables – remove the covers like on the pictures.
2. Now hold the cable which you want to tense.
3. Using the nut – tension the cable.
4. Repeat step 2 and 3 to the other cables you want to tension.
5. After tensioning – fit the covers back.

Part 3
Electronics/Troubleshooting

Electronics

Full electronic equipment provided with the crane contains:

- Box
- AC for leveling head



- Leveling head



- Joystick



- Cables

- Wireless system (optional)



Troubleshooting

Symptom	Cause	Solution
After turning on the box, power switch neon is off and system not responds	Fuse blow up	Check fuse and power supply switches
LCD display shows "TERMINAL" after 5 sec from turning on the system	Joystick cable fault or interface electronics in joystick or main board is damaged	Check joystick cable, if cable is ok then check internal communication interface in joystick or main board
LCD display shows "READY" but the motor is not stable	Tachogenerator cable is damaged	Check crane cable, motor cable, brushes. If cable is ok then check connection between cannon connector and servo amplifier
LCD display shows "READY" but you can't move the crane with the joystick or manually	<ol style="list-style-type: none"> 1. Motor cable fault, security bridge is open, startup electronics is damaged 2. Proximity switches connection fault 	<ol style="list-style-type: none"> 1. Check motor cable if it's ok then check motor connections and security bridge connection and start up electronics 2. Check motor cable, if it's ok then check connections on the crane and internal electronics (both proximity switches are normally closed)
Crane doesn't stop on proximity switch	Proximity switches connection fault	Check motor cable, if it's ok then check both proximity switch, if you push them they're

		opened, if pushing doesn't have any effect then probably cable have short circuit or proximity switch is broken
LCD display shows "ERROR 01"	2.5V joystick cable is damaged	Check connection between speed potentiometer and joystick PCB
LCD display shows "ERROR 02"	GND joystick cable is damaged	Check connection between speed potentiometer and joystick PCB
LCD display shows "ERROR 03"	1.25V joystick cable is damaged	Check connection between speed potentiometer and joystick
LCD display shows "ERROR 04"	Speed joystick cable is damaged	Check connection between speed potentiometer and joystick PCB
LCD display shows "ERROR 05"	DAC range error	Check connection between security voltage check, if it's ok then you have to check internal DAC module
LCD display shows "ERROR 06"	DAC check wire fault	Check connection between security voltage check, if it's ok then check internal DAC module
LCD display shows "ERROR 07"	DAC feed error	Check connection between security voltage check, if it's ok then check internal DAC module
LCD display shows "ERROR 08"	Encoder ADCQAF	Check encoder QAF connection, check motor cable, crane cable and

		encoder
LCD display shows "ERROR 09"	Encoder ADCQBF	Check encoder QBF connection, check motor cable, crane cable and encoder
LCD display shows "ERROR 10"	Encoder XINT	Check encoder connection, check motor cable, crane cable and encoder
LCD display shows "ERROR 11"	Joystick stop	Turn off and turn on BOX. If this doesn't help then check joystick cable, if it's ok then check internal electronics
LCD display shows "ERROR 12"	Servo inhibit fault	Check connections between main board and servo, if it's ok then check internal electronics on main board and check servo
LCD display shows "ERROR 13"	DAC Init error	Check connection between security voltage check, if it's ok then check internal DAC module
LCD display shows "ERROR 14"	Encoder Init error	Check connections between encoder and mainboard and supply of the encoder
Box give a six or seven beeps	Voltage error	Check all power supplies